

Central Park Crossing Fredericksburg, Virginia

LOCATION

- Southeast Corner of Central Park Boulevard and Trade Street in Fredericksburg, VA
- Lighted Intersection

HIGHLIGHTS

- Approximately **18,000 square foot** lakeside shopping center in Central Park, the Largest Power Center on the East Coast
- End-Cap Available **3,600 s.f.**
- **Traffic Count:**
 Carl D. Silver Pkwy - **42,208 ADT**
 Plank Road (Rt. 3) - **79,000 ADT**

DEMOGRAPHICS*

	3 Mile	5 Mile	7 Mile
Population	39,808	100,247	138,741
Households	14,679	35,456	48,127
Median Household Income	\$55,396	\$64,273	\$67,426

For More Information, Contact

MARCUS BOURN
703.442.4500 ext. 20
mbourn@nextrealty.com

LEN PICK
703.442.4500 ext. 16
lpick@nextrealty.com



All information provided is thought to be accurate and factual, however, no liability is assumed for errors and omissions.
 * 2006 Traffic Counts provided by the Virginia Department of Transportation
 **Demographics are 2007 Estimates provided by Sites USA © 2008

Central Park Crossing

Fredericksburg, Virginia

www.nextrealty.com

RETAIL SPACE
FOR LEASE

AVAILABLE

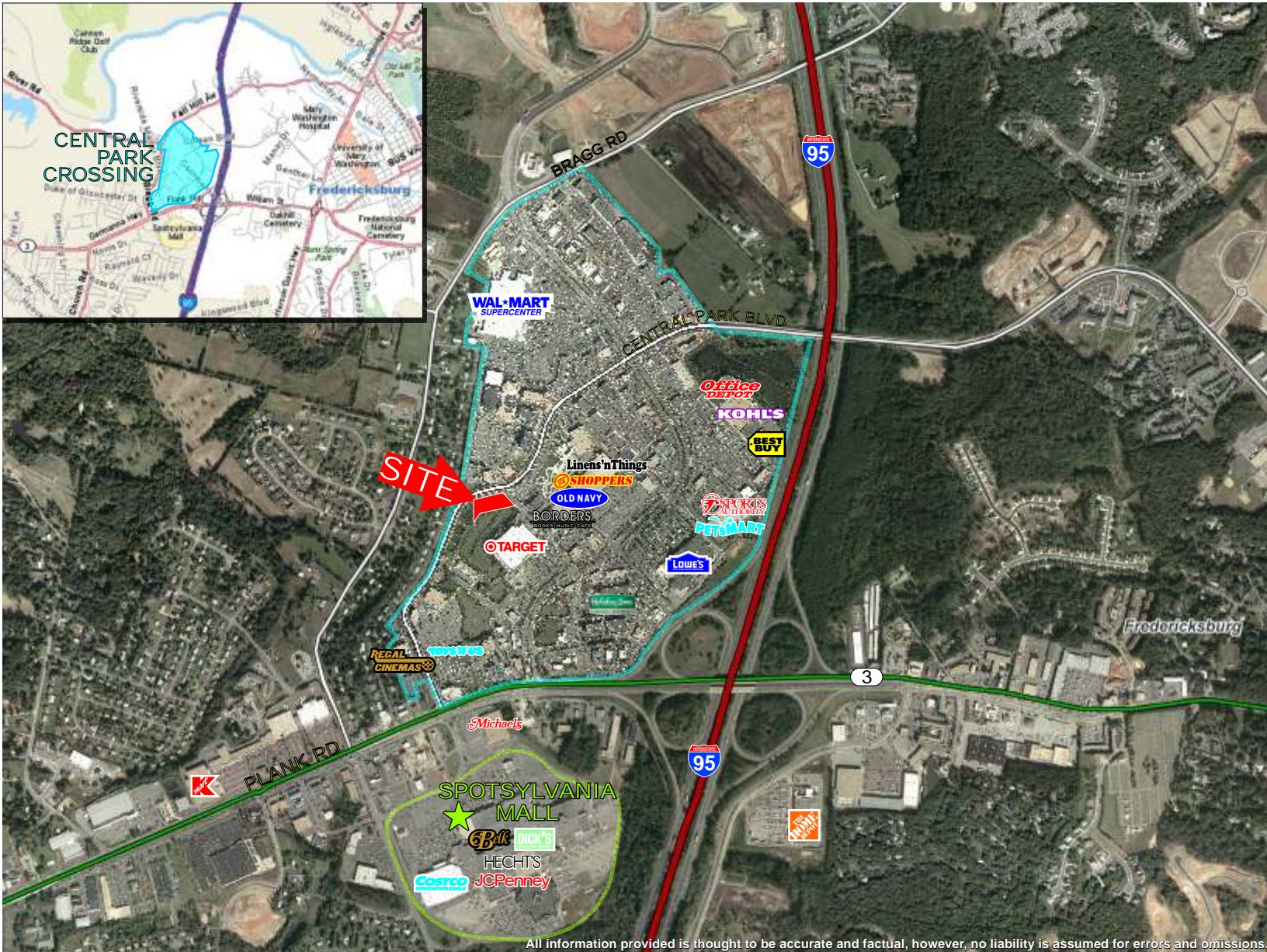
- 3,600 s.f.



For More Information, Contact

MARCUS BOURN
703.442.4500 ext. 20
mbourn@nextrealty.com

LEN PICK
703.442.4500 ext. 16
lpick@nextrealty.com



All information provided is thought to be accurate and factual, however, no liability is assumed for errors and omissions.

For More Information, Contact

MARCUS BOURN
703.442.4500 ext. 20
mbourn@nextrealty.com

LEN PICK
703.442.4500 ext. 16
lpick@nextrealty.com